



IDS Lift-Net Tech Support

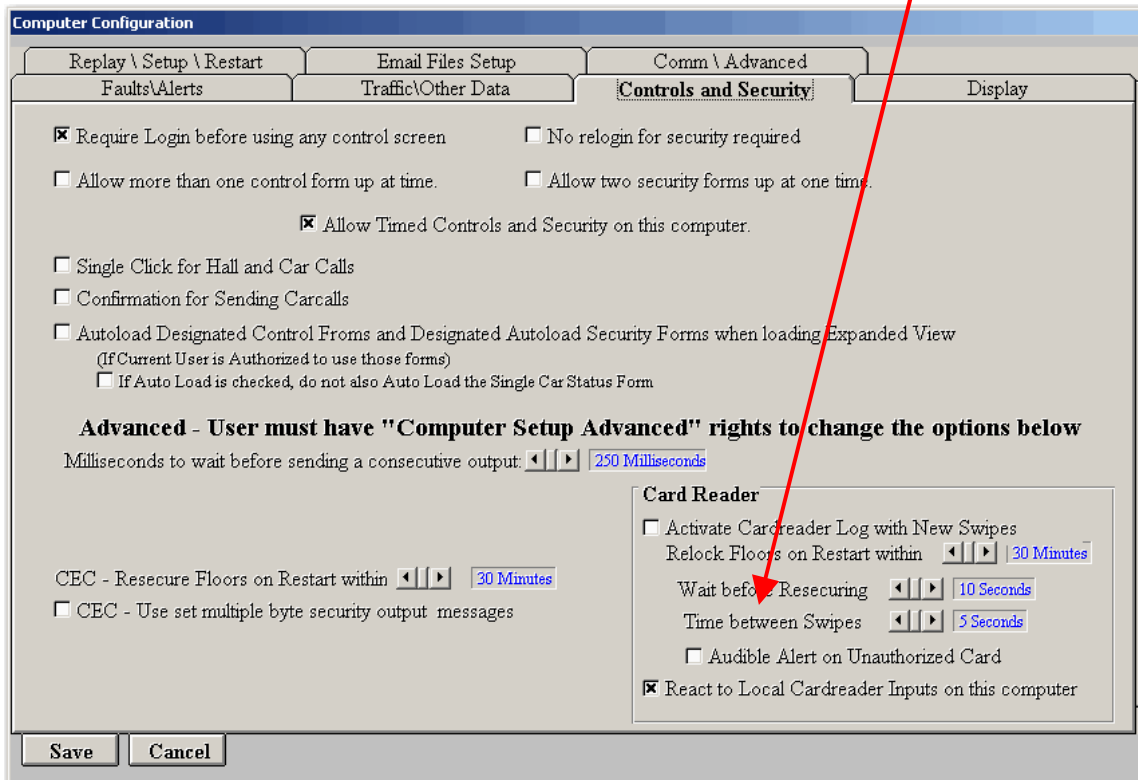
LED Confirmation of Valid Code When Using Essex Keypads

Essex keypads have red and green LED's. The red LED is lit until the brown keypad wire is pulled low, then the red LED goes off and the green LED goes on.

We connect the brown wire (LED control) from the keypad harness to one side of a normally open contact, the other side goes to the black wire (common) from the keypad harness.

We then activate a relay connected to the LNP card when a correct code is entered at the keypad. This will allow the red LED to go off and the green LED to go on.

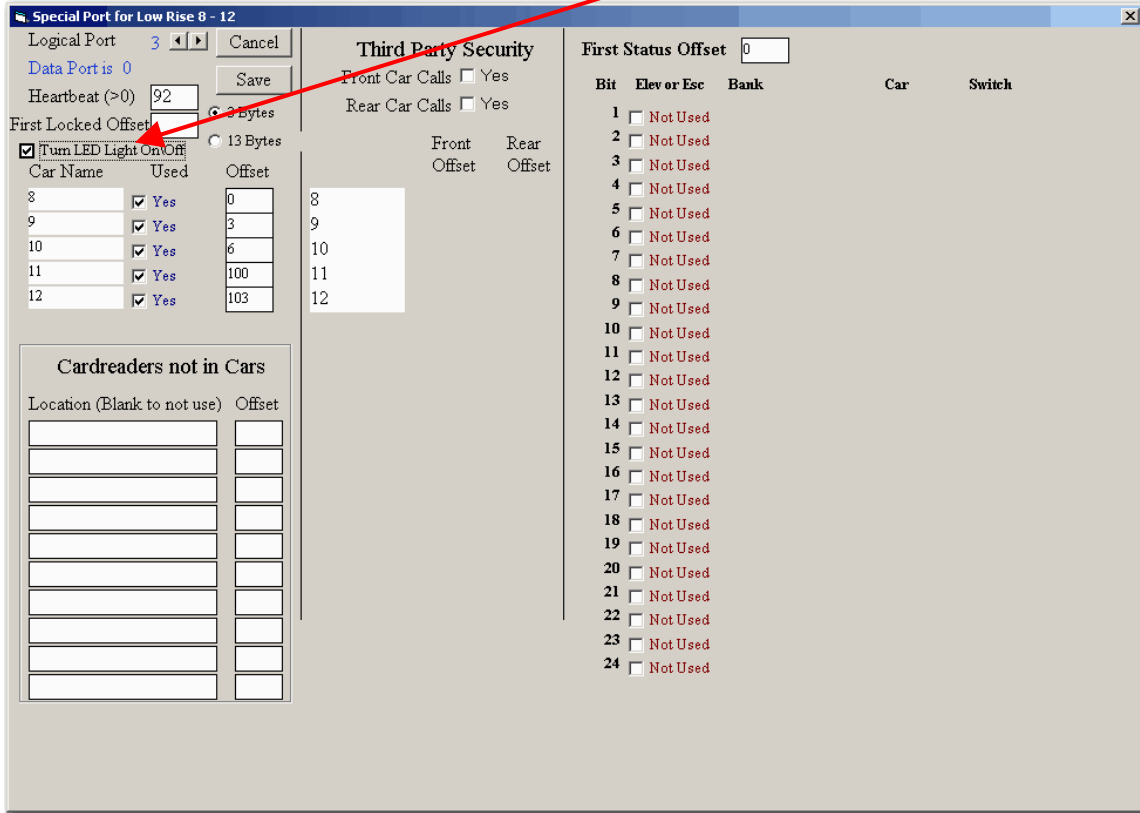
This relay will stay activated for the length of time set with "Time Between Swipes" on the "This Computer Setup"/"Controls" screen.





IDS Lift-Net Tech Support

To activate this feature check the box marked “Turn LED Light On/Off” at the details page in the Configuration Editor program.



Each LNP can operate three keypads (or card swipes). LN_relay modules will be connected to LNP socket “A” (95). Relay A1 will operate when logical car 1 keypad (first car in bank) enters a valid code. Relay A2, and A3 will operate with logical car 2 and 3.

When there are more than 3 cars in a bank a second LNP card is used. LN_relay modules will be connected to LNP socket “A” (95). Relay A4 will operate when logical car 4 keypad (fourth car in bank) enters a valid code. Relay A5, and A6 will operate with logical car 5 and 6.